

## FUJIFILM PRESSURE DISTRIBUTION MAPPING SYSTEM for PRESCALE

# FPD-8010E



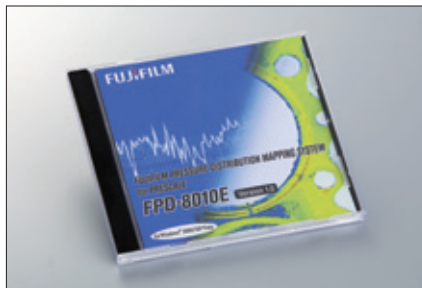
**Easy to Read, Easy to Understand Prescale Pressure Analysis in numerical format is now available!**

FPD-8010E provides a wide range of effective presentation and report functions utilizing FPD-8010E software and a scanner to digitize Prescale outputs to allow the user to produce multi-faceted measurement data such as pressure distribution and enlargement, cross-sectional distribution, and 3-D image display. This serves to accelerate product development and improved yields based on detailed multi-faceted measurement data and analysis.

## System Configuration

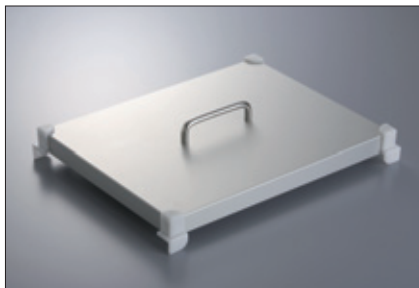
### ● Dedicated Software

Converts Prescale density values into pressure values.



### ● Dedicated Cover

This manuscript hold-down scanner cover improves date-read precision.

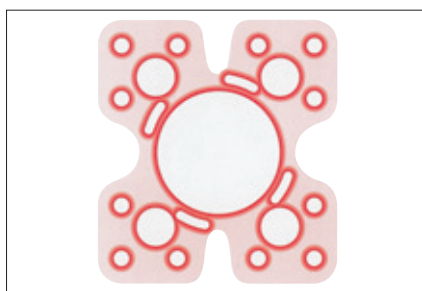


### ● Calibration Sheet

The calibration sheet limits scanner-read errors to a fixed range.



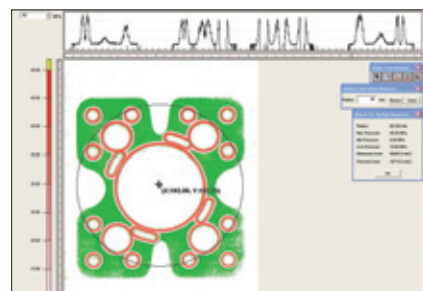
## How to use



① Prepare the colored Prescale.



② Scan Prescale Samples  
(Scanner purchased separately by user)

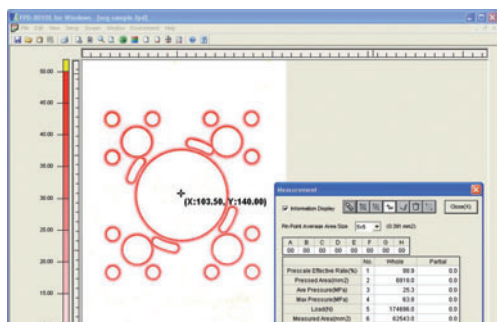


③ Perform analysis utilizing FPD-8010E Software.

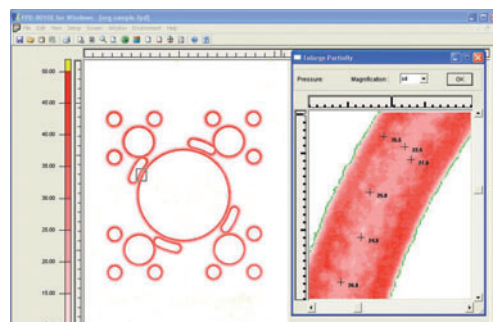


# Functions

## Overall Measurement



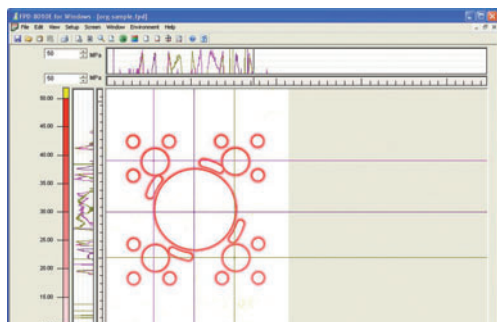
Various data such as average pressure and maximum pressure are displayed.



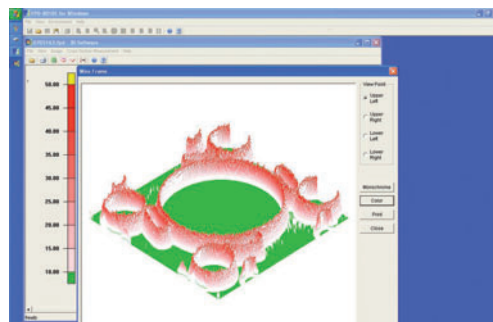
The specified field is enlarged. (X 4, X 8, X 16)

## Partial Enlargement

## Pressure Cross Section



Pressure distribution on a line passing through a specified point is shown on a line graph.



Pressure is displayed in 3-D format.

## Wire Frame

## Total Weight Distribution

The upper and left segments of the total pressure are displayed on a bar graph.

## Text Data Output

Pressure data is exported to a text file.

## Histogram Analysis

Pressure on the circumference is displayed as a histogram.

## Pressure Distribution Animation

Step-by-step pressure values are displayed in animated format.

# Specifications

Product Name	FUJIFILM PRESSURE DISTRIBUTION MAPPING SYSTEM for PRESCALE
Model	FPD-8010E
Main Functions	Prescale image input function Pressure distribution display function/Pressure data output function 3D display function/polar coordinate display function
Scan Sizes	Single Read: 297mm X 210mm (11.7 in X 41.3 in) Maximum: 891mm X 1050mm (35.1 in X 41.3 in)
Resolution	0.125 (200dpi) , 0.25 (100dpi) , 0.5, 1, 2mm sq.
Dedicated Cover Weight	570g
Dedicated Cover Dimensions	70 (H) × 290 (W) × 364 (D) mm

Packed Items	Dedicated software, dedicated cover, calibration sheet, installation manual, software license
Scanner	Please ask your dealer for information on recommended scanner types.

## Recommended Software Environment

OS	Windows® 2000 Professional SP4 and more Windows® XP Home Edition Windows® XP/ Professional SP2 and more Windows Vista™ Business Windows Vista™ Home Premium
CPU	Pentium® III 1GHz or Higher
Memory	512MB or more
Display	XGA or better, 65,000 colors or more

# Prescale Product Lineup



Product (Code)	Product size W(mm) × L(m)
Ultra Super Low Pressure (LLLW)	270 × 5
Super Low Pressure (LLW)	270 × 6
Low Pressure (LW)	270 × 12
Medium Pressure (MW)	270 × 12
Medium Pressure (MS)	270 × 12
High Pressure (HS)	270 × 12
Super High Pressure (HHS)	270 × 12

\*Pentium is a trademark of Intel. Windows is a trademark or registered trademark of Microsoft Corporation in the USA and other countries. All other brands and product names are trademarks or registered trademarks of their respective owners.

**FUJIFILM**  
FUJIFILM Corporation

Sensor Products Inc.  
300 Madison Ave, Madison, NJ 07940 USA  
1.800.755.2201 (Toll Free)  
sales@sensordprod.com

An authorized Fujifilm Prescale distributor in the U.S.A., Canada, Mexico and the Caribbean only.